

PRO
DUCT
CAT
ALOG

MINI
PC

ZOTAC

ZBOX

- **INTRODUCTION**

 - About ZOTAC

 - Why ZOTAC

- **PRODUCT SERIES**

 - A ZBOX for Every Need

 - **BUSINESS**

 - C Series

 - **HOME**

 - M Series

 - **GAMING & CREATION**

 - E Series

 - Q Series

 - **SPECIALIZED USES**

 - P Series

A
B
O
U
T
Z
O
T
A
C

OUR STORY

ZOTAC Technology Pte. Ltd. is a Singapore-based hardware manufacturer focusing on high-quality, industry leading PC components and mini PCs.

Established in 2006 under parent company PC Partner, ZOTAC Technology has continued to push the limit in what is possible in the Personal Computer space, putting innovation at the forefront as we redefine what is possible with the compact and versatile ZBOX Mini PC lineup.

We understand deeply that everyone's computing needs are different. That is the reason why we have a diverse selection of Mini PCs made for almost every use case imaginable: From offices to gaming battle stations, to more fringe, specialized uses, ZOTAC always has something that perfectly fits your needs.





W H Y Z B O X

WIDE SPECTRUM

The ZOTAC ZBOX Mini PC have offerings in every power envelope — from power-sipping tiny boxes under 10W to performance beasts that is still surprisingly space-conscious, there is always a ZBOX for you.

PORTABLE & VERSATILE

With our largest and most powerful offerings at a sub-9 Liter footprint, the highly portable ZBOX can virtually be brought anywhere and installed anywhere, enabling endless usage possibilities in a variety of situations.

ROBUST & DURABLE

Being the same at the core with our professional solutions, our tried-and-true ZBOX enclosures and designs are industry-leading in terms of durability, longevity and thermal management to ensure long-term stability for critical tasks.



P R O D U C T S E R I E S



A ZBOX FOR
EVERY NEED

BUSINESS



Business-oriented ZBOX Mini PCs have great multi-core capabilities in desk-saving footprints. Virtually nonexistent noise footprint and unbeatable energy-efficiency make them ideal choices as low-maintenance, high-ROI office equipment.

HOME



Small, quiet and easy to use. These are qualities that make great daily drivers for most users. These all-rounded ZBOX Mini PCs geared for everyday use can browse the web, check emails, access streaming services or complete various lightweight assignments without breaking a sweat.

GAMING & CREATION



Featuring some of the most powerful processors and graphics cards of the current generation, our Gaming and Creation ZBOX models are state-of-the-art machines made for the power users, gamers, and enthusiasts alike.

SPECIALIZED USES



Less standard form factors, equally powerful. These ZBOX Mini PCs are there to power your next interesting project or venture with unrivalled robustness and performance for their size.



BUSINESS



THE ORIGINAL MINI PC

Business-oriented ZBOX Mini PCs have great multi-core capabilities in desk-saving footprints. Virtually nonexistent noise footprint and unbeatable energy-efficiency make them ideal choices as low-maintenance, high-ROI office equipment.

MULTI-CORE PERFORMANCE

SILENT

DESK-SAVING

ENERGY EFFICIENT





ZBOX CI360/CI338 CI337/CI331 NANO

The ZBOX CI360/CI338 / CI337 / CI331 nano feature power-efficient Intel processors to give you a silent experience in a compact PC. The robust, passively cooled design of this series feature no moving components, which brings extra reliability and durability for day-to-day usage. Honeycomb vents and a large aluminum heatsink enhance exhaust flow and heat transfer which keeps the system housed within operating specifications and with sustained performance.

B
U
S
I
N
E
S
S
-
C
S
E
R
I
E
S



FANLESS



SILENT



0.92
LITERS



VESA
MOUNTABLE



UP TO
16GB MEMORY





C SERIES

B
U
S
I
N
E
S
S
-
S
E
R
I
E
S



ZBOX-CI360NANO	ZBOX-CI338NANO	ZBOX-CI337NANO	ZBOX-CI331NANO
 Intel Processor N150 (quad-core 0.8 GHz, up to 3.6 GHz)	 Intel Processor N150 (quad-core 0.8 GHz, up to 3.6 GHz)	 Intel Processor N100 (quad-core 0.8 GHz, up to 3.4 GHz)	 Intel Celeron N5100 (quad-core 1.1GHz, up to 2.8GHz)
 Intel Graphics	 Intel Graphics	 Intel UHD Graphics	 Intel UHD Graphics
 ■ 1 x DDR5-4800 SO-DIMM Memory slot (Up to 16GB)	 ■ 1 x DDR4-3200 SO-DIMM Memory slot (Up to 16GB)	 ■ 1 x DDR5-4800 SO-DIMM Memory Slot (Up to 16GB)	 ■ 2 x DDR4-2933/2666 SO-DIMM Memory slots (Up to 16GB)
 ■ 8GB DDR5-4800 SO-DIMM Pre-Installed	 ■ 8GB DDR4 SO-DIMM Pre-Installed	■ N/A	 ■ 4GB DDR4 SO-DIMM Pre-Installed
 ■ 1 x M.2 PCIe 3.0 x2 SSD Slot (2242/2280) 1 x M.2 PCIe 3.0 x1 / SATA SSD Slot (2242/2280)	 ■ M.2 PCIe 3.0 x2 SSD Slot (2242/2280) M.2 PCIe 3.0 x1 / SATA SSD Slot (2242/2280)	 ■ M.2 PCIe 3.0 x1 / SATA SSD Slot(2242) 2.5 inch SATA 6.0 Gb/s HDD/SSD bay	 ■ 2.5 inch SATA 6.0 Gb/s HDD/SSD bay
 ■ 128GB M.2 SSD Pre-Installed + M.2 PCIe 3.0 x1 / SATA SSD Slot (2242/2280)	 ■ 128GB M.2 SSD Pre-Installed + M.2 PCIe 3.0 x1 / SATA SSD Slot (2242/2280)	■ N/A	 ■ 120GB M.2 SATA SSD onboard + 2.5 inch SATA 6.0 Gb/s HDD/SSD bay
2 x HDMI* Connector (Supports 4K 60Hz as specified in the HDMI 2.0 Specification)	2 x HDMI* Connector (Supports 4K 60Hz as specified in the HDMI 2.0 Specification)	2 x HDMI* Connector (Supports 4K 60Hz as specified in the HDMI 2.0 Specification)	1 x HDMI* Connector (Supports 4K 60Hz as specified in the HDMI 2.0b Specification)
1 x DisplayPort 1.4 (up to 4096x2160@60Hz)	1 x DisplayPort 1.4 (up to 4096x2160@60Hz)	1 x DisplayPort 1.4 (up to 4096x2160@60Hz)	1 x DisplayPort 1.2 (up to 4096x2160@60Hz)
1 x DP via USB-C (up to 4096x2160@60Hz)	1 x DP via USB-C (up to 4096x2160@60Hz)	1 x DP via USB-C (up to 4096x2160@60Hz)	1x VGA (up to 1920x1080@60Hz)
3 x USB 3.2 Gen2 (10Gbps, Type-A)	3 x USB 3.2 Gen2 (10Gbps, Type-A)	3 x USB 3.2 Gen2 (10Gbps, Type-A)	2 x USB 3.2 (10Gbps, Type-A)
1 x USB 3.2 Gen2 (10Gbps, Type-C)	1 x USB 3.2 Gen2 (10Gbps, Type-C)	1 x USB 3.2 Gen2 (10Gbps, Type-C)	1 x USB 3.0 (5Gbps, Type-C) 1 x USB 3.0 (5Gbps, Type-A) 1 x USB 2.0 (Type-A)
Wi-Fi 6E	Wi-Fi 6	Wi-Fi 6	Wi-Fi 5
Bluetooth 5.3	Bluetooth 5.2	Bluetooth 5.2	Bluetooth 5
Dual Gigabit LAN	Dual Gigabit LAN	Dual Gigabit LAN	Dual Gigabit LAN
3-in-1 card reader (SD/SDHC/SDXC)z	3-in-1 card reader (SD/SDHC/SDXC)	3-in-1 card reader (SD/SDHC/SDXC)	3-in-1 card reader (SD/SDHC/SDXC)
■ Windows 11 Ready	■ Windows 11 Ready	■ Windows 11 Ready	■ Windows 11 Ready
■ Windows 11 Pro Pre-installed	■ Windows 11 Pro Pre-installed	■ N/A	■ Windows 11 Pro Pre-installed

Length: 127.8mm (5.03in) x Width: 126.8mm (4.99in) x
 Height: 56.8mm (2.24in)

■ Barebone ■ Windows



ZBOX CI675/ CI655 NANO

The ZBOX CI675 / CI655 nano is a powerful, compact, silent mini PC equipped with Intel Core Ultra processors using the Intel 3 architecture. With 12 cores and 14 threads, as well as an integrated Neural Processing Unit (NPU) to offload AI workloads for improved power and processing efficiencies, empower users with smarter capabilities.



FANLESS



SILENT



1.79
LITERS



VESA
MOUNTABLE



UP TO
64GB MEMORY



B
U
S
I
N
E
S
S
-
C
S
E
R
I
E
S



C SERIES



ZBOX-CI675NANO


ZBOX-CI655NANO


Intel Core Ultra 7 255U
(12-core, up to 5.2 GHz)


Intel Core Ultra 5 225U
(12-core, up to 4.8 GHz)


Intel Graphics


2 x DDR5-5600/5200 SODIMM Slot (up to 64GB)


1x M.2 NVMe PCIe 4.0 x4 SSD slot (2280)
1x M.2 NVMe PCIe 4.0 x4 /SATA SSD slot (2280)

1 x HDMI Connector
(Supports 4K 60Hz as specified in the HDMI 2.0b Specification)

2 x DisplayPort 1.4
(up to 4096X2160@60Hz)

4 x USB 3.2 Gen2 (10Gbps, Type-A)

1 x USB 3.2 Gen2 (10Gbps, Type-C)

1 x USB 2.0 (480Mbps, Type A)

Wi-Fi 7

Bluetooth 5.4

Gigabit LAN

Windows 11 Ready

Length: 204mm (8.03in) x Width: 129mm (5.08in) x
Height: 68mm (2.68in)



ZBOX CI671/ CI651 NANO

The ZBOX CI671 / CI651 nano is a powerful, compact, silent mini PC equipped with Intel Core Ultra processors using the Intel 4 architecture. With 12 cores and 14 threads, as well as an integrated Neural Processing Unit (NPU) to offload AI workloads for improved power and processing efficiencies, empower users with smarter capabilities.



FANLESS



SILENT



1.79
LITERS



VESA
MOUNTABLE



UP TO
64GB MEMORY





C SERIES



ZBOX-CI671NANO

ZBOX-CI651NANO



Intel Core Ultra 7 155U
(12-core 1.2 GHz, up to 4.8 GHz)



Intel Core Ultra 5 125U
(12-core 0.8 GHz, up to 4.3 GHz)



Intel Graphics



2 x DDR5-5600/5200 SODIMM Slot (up to 64GB)



1x M.2 NVMe PCIe 4.0 x4 SSD slot (2280)
1x M.2 NVMe PCIe 4.0 x4 /SATA SSD slot (2280)

1 x HDMI Connector
(Supports 4K 60Hz as specified in the HDMI 2.1 Specification)

2 x DisplayPort 1.4
(up to 4096X2160@60Hz)

4 x USB 3.2 Gen2 (10Gbps, Type-A)

1 x USB 3.2 Gen2 (10Gbps, Type-C)

1 x USB 2.0 (480Mbps, Type A)

Wi-Fi 6

Bluetooth 5.2

Gigabit LAN

Windows 11 Ready

Length: 204mm (8.03in) x Width: 129mm (5.08in) x
Height: 68mm (2.68in)



ZBOX C I669 / C I649 / C I629 NANO

The ZOTAC ZBOX C Series CI669 / CI649 / CI629 nano instills silence in powerful computing hardware with 13th Gen Intel Core multi-threaded processors, Intel UHD Graphics, and Thunderbolt 4. A compact 1.79 liter footprint and modern design with a two-tone color scheme provide a timeless feel to captivate Offices and Workspaces with a silent and capable computer experience. With the bundled VESA mount plates, placement is even more versatile.

B
U
S
I
N
E
S
S
-
C
S
E
R
I
E
S



FANLESS



SILENT



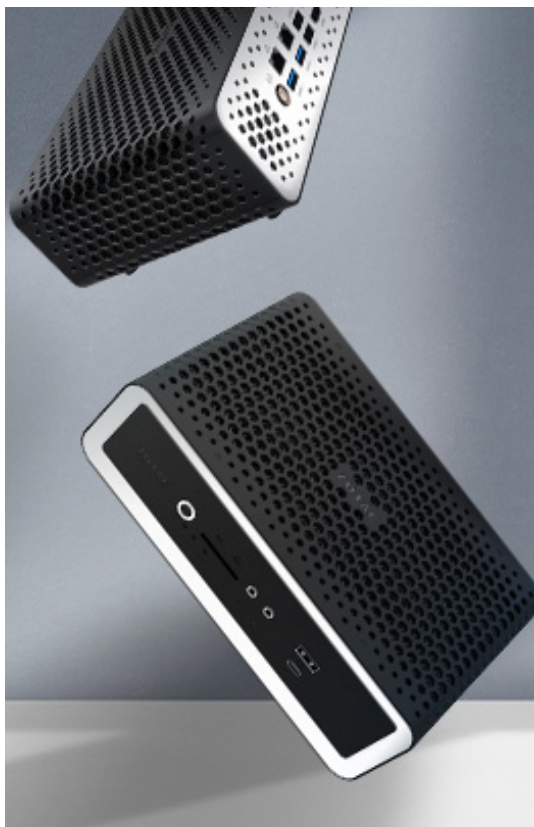
1.79 LITERS



VESA MOUNTABLE



UP TO 64GB MEMORY





C SERIES



ZBOX-CI669NANO	ZBOX-CI649NANO	ZBOX-CI629NANO
 Intel Core i7-1355U (10-core 1.7 GHz, up to 5.0 GHz)	 Intel Core i5-1335U (10-core 1.3 GHz, up to 4.6 GHz)	 Intel Core i3-1315U (6-core 1.2 GHz, up to 4.5 GHz)
 Intel Iris Xe Graphics (Dual-Channel Memory) Intel UHD Graphics (Single-Channel Memory)	 Intel Iris Xe Graphics (Dual-Channel Memory) Intel UHD Graphics (Single-Channel Memory)	 Intel UHD Graphics
 2 x DDR5-5200/4800 SODIMM Slot (up to 64GB)		
 1 x M.2 NVMe PCIe 4.0 x4 SSD slot (2230/2242) 2.5" SATA 6.0Gbps HDD/SSD bay		
1 x HDMI® Connector (Supports 4K 60Hz as specified in the HDMI 2.0b Specification)		
1 x DisplayPort 1.4 (up to 4096X2160@60Hz)		
DisplayPort 1.4 via Thunderbolt (up to 4096X2160@60Hz)		
1 x Thunderbolt 4 (20Gbps)		
4 x USB 3.1 Gen2 (10Gbps, Type A)		
1 x USB 2.0 (480Mbps, Type A)		
Wi-Fi 6		
Bluetooth 5.2		
Dual LAN (2.5Gbps + Gigabit)		
Windows 11 Ready		
Length: 204mm (8.03in) x Width: 129mm (5.08in) x Height: 68mm (2.68in)		

B
U
S
I
N
E
S
S
-
C
S
E
R
I
E
S



ZBOX EDGE CI345 / CI343 / CI342

The ZBOX edge CI345 / CI343 / CI342 enables a more robust option with no moving components while maintaining a low-profile design with a wide range of I/O connectivity. A silent solution for edge computing and audiophiles, a nimble device for the everyday computing needs, a powerful digital signage platform with support for dual 4K displays, and so much more in a silent, ultra-thin mini PC.

B
U
S
I
N
E
S
S
 -
C
S
E
R
I
E
S



FANLESS



SILENT



0.70 LITERS



ULTRA THIN



VESA MOUNTABLE



UP TO 16GB MEMORY





C SERIES



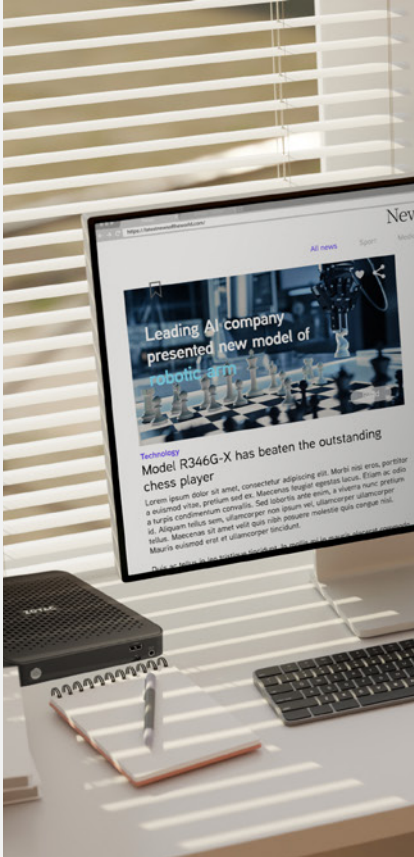
B
U
S
I
N
E
S
S
-
C
S
E
R
I
E
S

ZBOX-CI345	ZBOX-CI343	ZBOX-CI342
 Intel Processor N150 (quad-core 0.8 GHz, up to 3.6 GHz)	 Intel Processor N100 (quad-core 0.8 GHz, up to 3.4 GHz)	 Intel Pentium N6415 (quad-core 1.2 GHz, up to 3.0GHz)
 Intel Graphics	 Intel UHD Graphics	 Intel UHD Graphics
 ■ 1 x DDR5-4800 SO-DIMM Memory slot (Up to 16GB)	 ■ 1 x DDR5-4800 SO-DIMM Memory slot (Up to 16GB)	 ■ 2 x DDR4-3200/2666 SODIMM slots (up to 32GB)
■ N/A	■ N/A	 ■ 4GB DDR4 SO-DIMM Pre-Installed
 ■ 1 x M.2 PCIe 3.0 x4 / SATA SSD Slot (2242/2280)	 ■ 1 x M.2 PCIe 3.0 x4 / SATA SSD Slot (2242/2280)	 ■ 1 x M.2 PCIe 3.0 x2 / SATA SSD Slot (2242/2280)
■ N/A	■ N/A	 ■ 128GB M.2 SATA SSD Pre-Installed
1 x HDMI® Connector (Supports 4K 60Hz as specified in the HDMI 2.0 Specification)	1 x HDMI® Connector (Supports 4K 60Hz as specified in the HDMI 2.0b Specification)	1 x HDMI® Connector (Supports 4K 60Hz as specified in the HDMI 2.0b Specification)
1 x DisplayPort 1.4 (up to 4096x2160@60Hz)	1 x DisplayPort 1.4 (up to 4096x2160@60Hz)	1 x DisplayPort 1.2 (up to 4096x2160@60Hz)
DisplayPort via USB-C	N/A	N/A
2 x USB 3.1 Gen 2 (10Gbps, Type A)	2 x USB 3.1 Gen 2 (10Gbps, Type A)	2 x USB 3.1 Gen 2 (10Gbps, Type A)
1 x USB 3.1 Gen 2 (10Gbps, Type C)	1 x USB 3.1 Gen 2 (10Gbps, Type C)	1 x USB 3.1 Gen 2 (10Gbps, Type C)
Wi-Fi 7	Wi-Fi 6	Wi-Fi 6E
Bluetooth 5.4	Bluetooth 5.2	Bluetooth 5.2
Dual Gigabit LAN	Dual Gigabit LAN	Dual Gigabit LAN
■ Windows 11 Ready	■ Windows 11 Ready	■ Windows 11 Ready
■ N/A	■ N/A	■ Windows 11 Pro Pre-Installed
Length: 147.2mm (5.8in) x Width: 147.2mm (5.8in) x Height: 32.1mm (3.46in)		

■ Barebone

■ Windows

HOME



THE ORIGINAL MINI PC

Small, quiet and easy to use. These are qualities that make great daily drivers for most users. These all-rounded ZBOX Mini PCs geared for everyday use can browse the web, check emails, access streaming services or complete various lightweight assignments without breaking a sweat.

ALL-ROUNDED PERFORMANCE

DESK-SAVING

EXPANDABLE

VERSATILE PLACEMENT





ZBOX EDGE MI676 / MI656

The ZBOX edge MI676 / MI656 are thin, ultra-compact mini PCs equipped with Intel Core Ultra Series 2 processors. With up to 16 cores and 16 threads, Intel ARC Graphics on board, as well as an integrated Neural Processing Unit (NPU) to offload AI workloads for improved power efficiencies, the ZBOX edge MI676 / MI656 empowers users with more performance and more capabilities.



ACTIVE COOLING



0.64 LITERS



ULTRA THIN



VESA MOUNTABLE



UP TO 64GB MEMORY

H O M E - M I N I P C S S E R I E S





M SERIES



ZBOX-MI676

ZBOX-MI656



Intel Core Ultra 7 Processor 255H
(16-core 2 GHz, up to 5.1 GHz)



Intel Core Ultra 5 Processor 225H
(14-core 1.7 GHz, up to 4.9 GHz)



Intel Arc 140T Graphics (Dual-Channel Memory)
Intel Graphics (Single-Channel Memory)



Intel Arc 130T Graphics (Dual-Channel Memory)
Intel Graphics (Single-Channel Memory)



2 x DDR5-5600/5200 SODIMM slots (up to 64GB)



1 x M.2 NVMe PCIe 4.0 x4 SSD slot (2230/2242)
1 x M.2 NVMe PCIe 4.0 x4 / SATA SSD slot (2280)

1 x HDMI® Connector
(Supports 4K 60Hz as specified in the HDMI 2.1 Specification)

1 x DisplayPort 1.4
(up to 4096x2160@60Hz)

5 x USB 3.2 Gen 2 (10Gbps, Type A)

1 x USB 3.2 Gen 2 (10Gbps, Type C)

Wi-Fi 7

Bluetooth 5.4

Gigabit LAN

Windows 11 Ready

Length: 149.5mm (5.89in) x Width: 149.5mm (5.89in) x
Height: 28.5mm (3.46in)



ZBOX MI673 / MI653 / MI633

The ZBOX MI673 / MI653 / MI633 are compact, active-cooled mini PCs with a wide ventilated design and full desktop 14th Generation Intel Core processors. With up to 20 cores and 28 threads, the ZBOX MI673 / MI653 / MI633 deliver powerful performance for businesses, office, school, home, and daily computing tasks with low-noise and a compact 1.79 overall size.



ACTIVE COOLING



1.79 LITERS



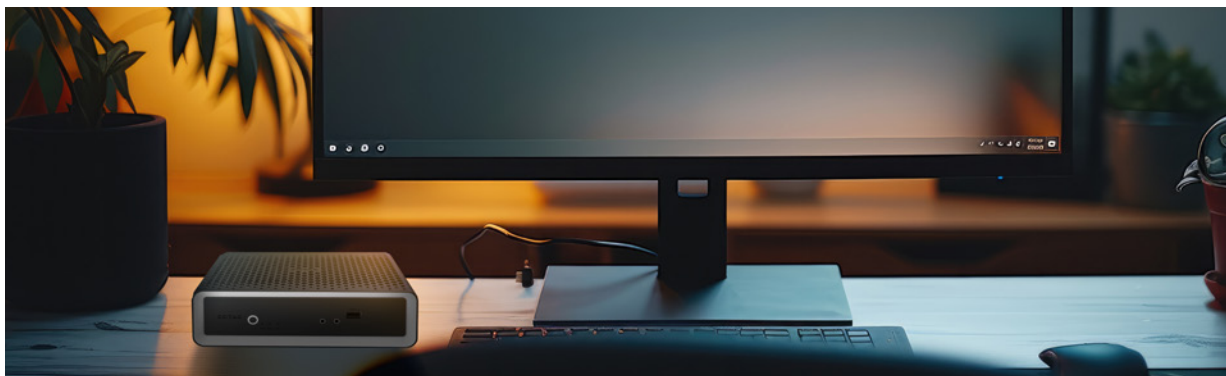
ULTRA THIN



VESA MOUNTABLE



UP TO 64GB MEMORY



H
O
M
E
-
M
S
E
R
I
E
S



M SERIES



ZBOX-MI673

ZBOX-MI653

ZBOX-MI633



Intel Core i7-14700
(20-core, up to 5.4 GHz)



Intel Core i5-14400
(10-core, up to 4.7 GHz)



Intel Core i3-14100
(4-core, up to 4.7 GHz)



Intel UHD Graphics 770



Intel UHD Graphics 730



2 x DDR4-3200 SODIMM slots (up to 64GB)



1 x M.2 NVMe PCIe 4.0 x4 SSD slot (2280)

1 x HDMI® Connector
(Supports 4K 60Hz as specified in the HDMI 2.1 Specification)

1 x DisplayPort 1.4 (up to 4096x2160@60Hz)

4 x USB 3.2 Gen 2 (10Gbps, Type A)
2 x USB 3.0 (5Gbps, Type A)

Wi-Fi 6

Bluetooth 5.2

Gigabit LAN

Windows 11 Ready

Length: 204mm (8.03in) x Width: 129mm (5.08in) x
Height: 68mm (2.68in)

H
O
M
E
-
M
S
E
R
I
E
S



ZBOX EDGE MA762

The ZBOX MA762 is a thin, ultra-compact mini PC equipped with the AMD Ryzen™ APU with up to 8 cores and 16 threads, as well as an AMD Radeon™ integrated graphics. ZBOX edge MA762 also support AMD Ryzen™ AI, empowering users with smarter capabilities.



ACTIVE COOLING



0.64 LITERS



ULTRA THIN



VESA MOUNTABLE



UP TO 64GB MEMORY



H
O
M
E
-
M
S
E
R
I
E
S



ZBOX-MA762



AMD Ryzen 7 7840HS
(8-core, 3.8 GHz, up to 5.1 GHz)



AMD Radeon™ 780M Graphics



2 x DDR5-5600/5200 SODIMM slots (up to 64GB)



1 x M.2 NVMe PCIe 4.0 x4 SSD slot (2280)

1 x HDMI® Connector
(Supports 4K 60Hz as specified in the HDMI 2.1 Specification)

1 x DisplayPort 1.4
(up to 4096x2160@60Hz)

DisplayPort via USB4

3 x USB 3.2 Gen 2 (10Gbps, Type A)

1 x USB4 (40Gbps)

Wi-Fi 6E

Bluetooth 5.2

Dual Gigabit LAN

Windows 11 Ready

Length: 149.5mm (5.89in) x Width: 149.5mm (5.89in) x
Height: 28.5mm (3.46in)



ZBOX EDGE MI672 / MI652

The ZBOX edge MI672 / MI652 are thin, ultra-compact mini PCs equipped with Intel Core Ultra Series 1 processors. With up to 16 cores and 22 threads, Intel ARC Graphics on board, as well as an integrated Neural Processing Unit (NPU) to offload AI workloads for improved power efficiencies, the ZBOX edge MI672 / MI652 empower users with more performance.



ACTIVE COOLING



0.64 LITERS



ULTRA THIN



VESA MOUNTABLE



UP TO 64GB MEMORY



H O M E - M S E R I E S



M SERIES



ZBOX-MI672

ZBOX-MI652



Intel Core Ultra 7 155H
(16-core 2.5 GHz, up to 4.8 GHz)



Intel Core Ultra 5 125H
(14-core 2.5 GHz, up to 4.5 GHz)



Intel Arc Graphics (Dual-Channel Memory)
Intel Graphics (Single-Channel Memory)



2 x DDR5-5600/5200 SODIMM slots (up to 64GB)



1 x M.2 NVMe PCIe 4.0 x4 SSD slot (2230/2240)
1 x M.2 NVMe PCIe 4.0 x4 / SATA SSD slot (2280)

1 x HDMI® Connector
(Supports 4K 60Hz as specified in the HDMI 2.1 Specification)

1 x DisplayPort 1.4
(up to 4096x2160@60Hz)

5 x USB 3.2 Gen 2 (10Gbps, Type A)

1 x USB 3.2 Gen 2 (10Gbps, Type C)

Wi-Fi 6

Bluetooth 5.2

Gigabit LAN

Windows 11 Ready

Length: 149.5mm (5.89in) x Width: 149.5mm (5.89in) x
Height: 28.5mm (3.46in)



ZBOX EDGE MI352 / MI351

The ZBOX edge MI352 / MI351 boast ultra-thin enclosures and are powered by an Intel® N-Series processor. With efficient thermal design, power management, and plenty of open ventilation, the ZBOX edge MI352 / MI351 maintain low-profile designs without sacrificing I/O connectivity.

H
O
M
E
-
M
S
E
R
I
E
S



ACTIVE COOLING



0.64 LITERS



ULTRA THIN



VESA MOUNTABLE



UP TO 16GB MEMORY





M SERIES



ZBOX-MI352

ZBOX-MI351



Intel Processor N100
(quad core, 0.8 GHz. Up to 3.4 GHz)



Intel UHD Graphics



■ 1 x DDR4-3200 SODIMM Slot (up to 16GB)



■ 1 x DDR5-4800 SODIMM Slot (up to 16GB)



■ 4GB DDR4-3200 SODIMM Pre-Installed



■ N/A



■ 1 x M.2 NVMe PCIe 3.0 x4 / SATA SSD (2242/2280)



■ 128GB M.2 SATA SSD Pre-Installed



■ N/A

1 x HDMI® Connector
(Supports 4K 24Hz as specified in
the HDMI 1.4 Specification)

1 x HDMI® Connector
(Supports 4K 60Hz as specified in
the HDMI 2.0 Specification)

1 x DisplayPort 1.4
(up to 4096x2160@60Hz)

4 x USB 3.2 Gen 2 (10Gbps, Type A)

Wi-Fi 6

Bluetooth 5.2

Gigabit LAN

■ Windows 11 Ready

■ Windows 11 Pro Pre-Installed

■ N/A

Length: 149.5mm (5.89in) x Width: 149.5mm (5.89in) x
Height: 28.5mm (3.46in)

■ Barebone

■ Windows



ZBOX EDGE MI668 / MI648

The ZBOX edge MI668 / MI648 boasts ultra-thin enclosures powered by Intel Core processors. With efficient thermal design, power management, and plenty of open ventilation, the ZBOX edge MI668 / MI648 still maintain a remarkably low-profile design without sacrificing I/O connectivity.

H
O
M
E
-
M
S
E
R
I
E
S



ACTIVE COOLING



0.64 LITERS



ULTRA THIN



VESA MOUNTABLE



UP TO 64GB MEMORY





M SERIES



ZBOX-MI668

ZBOX-MI648



Intel Core i7-1360P
(12-core 2.2 GHz, up to 5.0 GHz)



Intel Core i5-1340P
(12-core 1.9 GHz, up to 4.6 GHz)



Intel Iris Xe Graphics



2 x DDR5-5200/4800 SODIMM slots (up to 64GB)



1 x M.2 NVMe PCIe 4.0 x4 SSD slot (2280)
1 x M.2 NVMe PCIe 3.0 x4 / SATA SSD slot (2242)

1 x HDMI® Connector
(Supports 4K 60Hz as specified in the HDMI 2.0 Specification)

1 x DisplayPort 1.4
(up to 4096x2160@60Hz)

DisplayPort via Thunderbolt 4

1 x Thunderbolt 4 (40Gbps)

3 x USB 3.1 Gen 2 (10Gbps, Type A)

3-in-1 card reader (micro SD/SDHC/SDXC)

USB-C PD Power Supply

Wi-Fi 6

Bluetooth 5.2

Dual Gigabit LAN

Windows 11 Ready

Length: 149.5mm (5.89in) x Width: 149.5mm (5.89in) x
Height: 28.5mm (3.46in)

GAMING & CREATION

THE ORIGINAL MINI PC

Featuring some of the most powerful processors and graphics cards of the current generation, our Gaming and Creation ZBOX models are state-of-the-art machines made for power users, hardcore gamers, and enthusiasts alike.

CONSOLE-LIKE
DEDICATED GRAPHICS
DESKTOP-CLASS
UPGRADABLE





MAGNUS ONE

The MAGNUS ONE Series, at 8.48 liters, is the smallest desktop PC lineup powered by desktop GeForce RTX 50 Series Graphics Cards. Paired with a desktop Intel Core Ultra Series 2 processor, the MAGNUS ONE excels at gaming, creative tasks, or powering AI experiences. Tool-less access mechanisms also make upgrading memory, storage, or even a new graphics card a breeze.



DESKTOP GPU



DESKTOP CPU



INTEGRATED PSU



8.48 LITERS



UP TO 96GB MEMORY





E SERIES



ZBOX-EU27507TC

ZBOX-EU275070C

ZBOX-EU27506TC



Intel Core Ultra 7 Processor 265 (20-core, 2.4 GHz up to 5.3 GHz)



ZOTAC GAMING GeForce RTX 5070 Ti 16GB GDDR7



ZOTAC GAMING GeForce RTX 5070 12GB GDDR7



ZOTAC GAMING GeForce RTX 5060 Ti 16GB GDDR7



■ 2 x DDR5-6400 CSODIMM / DDR5-5600 SO-DIMM slots (up to 96GB)



■ 16GB DDR5 SO-DIMM Pre-Installed



■ 1 x M.2 NVMe PCIe 5.0 x4 SSD slot (2242, 2280)
1 x M.2 NVMe PCIe 4.0 x4 SSD slot (2242, 2280)
1 x 2.5-inch SATA 6Gbps HDD/SSD bay



■ 1TB M.2 NVMe SSD Pre-Installed
1 x M.2 NVMe PCIe 4.0 x4 SSD slot (2242, 2280)
1 x 2.5-inch SATA 6Gbps HDD/SSD bay

1 x HDMI® Connector (integrated)
(Supports 4K 60Hz as specified in the HDMI 2.0 Specification)

3 x DisplayPort 2.1b with UHBR20
(up to 4K 480Hz or 8K 165Hz with DSC)

1 x HDMI® Connector
(Supports 4K 480Hz HDR or 8K 120Hz HDR with DSC, and Gaming VRR as specified in the HDMI 2.1b Specification)

1 x Thunderbolt 4 (40Gbps)

4 x USB 3.2 Gen 2 (10Gbps, Type A)
3 x USB 3.0 (5Gbps, Type A)
1 x USB 3.0 (5Gbps, Type C)

3-in-1 card reader (UHS-II SD/SDHC/SDXC)

Wi-Fi 7

Bluetooth 5.4

Dual LAN (5Gbps + Gigabit)

■ Windows 11 Ready

■ Windows 11 Home Pre-Installed

Length: 270.5mm (10.65in) x Width: 126mm (4.96in) x
Height: 249mm (8.07in)

■ Barebone

■ Windows



MAGNUS EN

The MAGNUS EN Series features a full-fledged desktop GeForce RTX Graphics Cards in its tiny 2.65 Liter chassis. With up to a 20-Core Intel Core Ultra processor and a GeForce RTX 5060 Ti 16GB GDDR7 graphics card, the MAGNUS EN can outperform most computers of larger size, and excels at gaming, creative tasks, or even localized AI deployment.



HIGH END
LAPTOP CPU



2.65
LITERS



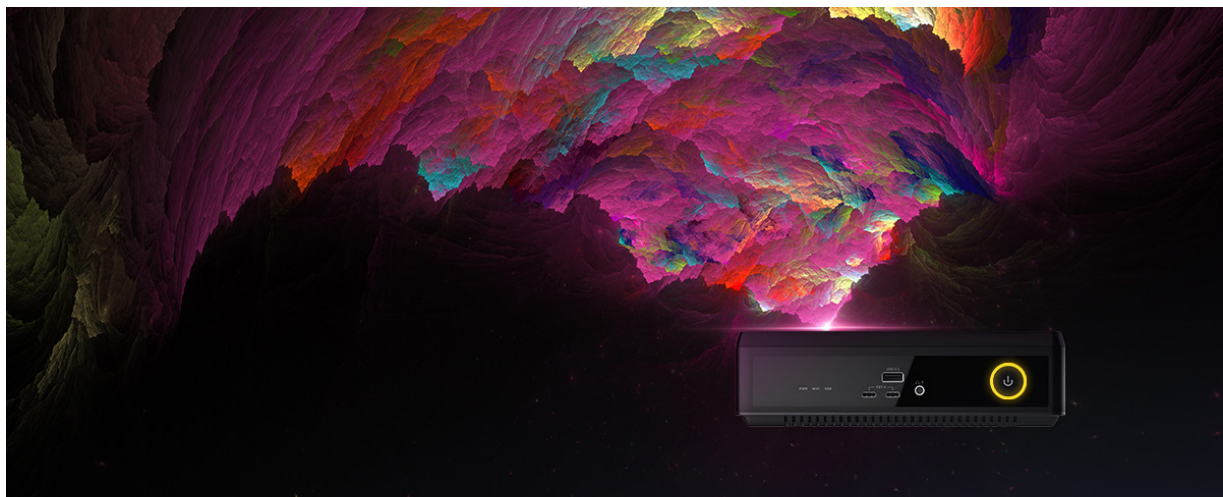
SLIM
DESIGN



UP TO
96GB MEMORY



DESKTOP
GPU





E SERIES



ZBOX-EN275060TC

ZBOX-EN255050EC



Intel Core Ultra 7 Processor 255HX
(20 Cores, 2.4 GHz up to 5.2 GHz)



Intel Core Ultra 5 Processor 235HX
(14 Cores, 2.9 GHz, up to 5.1 GHz)



GeForce RTX 5060 Ti GPU
(16GB GDDR7 128-bit)



GeForce RTX 5050 GPU
(8GB GDDR6 128-bit)



■ 2 x DDR5-6400 CSODIMM / DDR5-5600 SO-DIMM slots (up to 96GB)



■ 16GB DDR5-5600 Pre-Installed



■ 1 x M.2 NVMe PCIe 5.0 x4 SSD slot (2280)
1 x M.2 NVMe PCIe 4.0 x4 / SATA SSD slot (2280)



■ 1TB M.2 NVMe SSD
1 x M.2 NVMe PCIe 4.0 x4 / SATA SSD slot (2280)

1 x HDMI® Connector
(Supports 4K 480Hz HDR or 8K 120Hz HDR with DSC, and Gaming VRR as specified in the HDMI 2.1b Specification)

3 x DisplayPort 2.1b with UHBR20
(up to 4K 480Hz or 8K 165Hz with DSC)

2 x Thunderbolt 4 (40Gbps)

5 x USB 3.2 Gen2 (10Gbps, Type-A)

Wi-Fi 7

Bluetooth 5.4

Dual 2.5Gbps LAN

■ Windows 11 Ready

■ Windows 11 Home Pre-Installed

Length: 210mm (8.27in) x Width: 203mm (7.99in) x
Height: 62.2mm (2.45in)

■ Barebone

■ Windows



MAGNUS EAMAX

The MAGNUS EAMAX Series features a powerful AMD Ryzen AI MAX series APU and powerful AMD Radeon integrated Graphics for game-changing performance. Their Neural Processing Unit (NPU), as well as powerful graphics capabilities makes them ideal choices for gamers, creators, or users who require a small mini PC for AI-enhanced workloads.



HIGH END
LAPTOP APU



2.65
LITERS



SLIM
DESIGN



UP TO
128GB MEMORY



WALL
MOUNTABLE



GAMING & CREATION - E SERIES



E SERIES

G
A
M
I
N
G
&
C
R
E
A
T
I
O
N
-
E
S
E
R
I
E
S



ZBOX-EAMAX395C	ZBOX-EAMAX390C	ZBOX-EAMAX385C
 AMD Ryzen™ AI Max+ 395 (16-core 3.0 GHz, up to 5.1 GHz)	 AMD Ryzen™ AI Max 390 (12-core 3.2 GHz, up to 5GHz)	 AMD Ryzen™ AI Max 385 (8-core 3.6 GHz, up to 5GHz)
 AMD Radeon 8060S Integrated Graphics	 AMD Radeon 8050S Integrated Graphics	
 128GB LPDDR5x 8000MHz Memory (On-Board)	 32GB LPDDR5x 8000MHz Memory (On-Board)	
 ■ 3 x M.2 NVMe PCIe 4.0 x4 SSD slot (2242/2280)		
 ■ 1TB M.2 NVMe SSD 2 x M.2 NVMe PCIe 4.0 x4 SSD slot (2242/2280)		
2 x HDMI® Connector (Supports 4K 60Hz as specified in the HDMI 2.1 Specification)		
2 x DisplayPort 1.4 (up to 4096x2160@60Hz)		
DisplayPort via USB4		
4 x USB 3.2 Gen 1 (5Gbps, Type-A) 1 x USB 3.2 Gen 2 (10Gbps, Type-A) 1 x USB4 (40Gbps)		
Wi-Fi 7		
Bluetooth 5.4		
Dual 2.5Gbps LAN		
■ Windows 11 Ready		
■ Windows 11 Home Pre-Installed		
Length: 210mm (8.27in) x Width: 203mm (7.99in) x Height: 62.2mm (2.45in)		

■ Barebone

■ Windows



ZBOX QRP7N3500/ QRP7N2000

The ZOTAC ZBOX Q Series Mini PC accelerates creative and professional workflows with an NVIDIA RTX workstation GPU based on the powerful Ada Lovelace architecture and 13th Gen Intel Core i7 CPU. These mini but mighty workstation systems integrate powerful technologies into an ultra-small form factor design to provide powerful performance and efficiency for industrial applications.



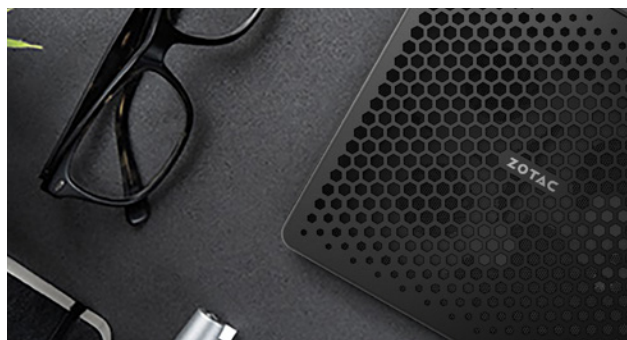
2.65
LITERS



SLIM
DESIGN



UP TO
64GB MEMORY





Q SERIES



ZBOX-QRP7N3500

ZBOX-QRP7N2000



Intel Core i7-13700HX (16-core 2.1 GHz, up to 5.0 GHz)



NVIDIA RTX 3500 Ada Generation Laptop GPU (12GB GDDR6 192-bit)



NVIDIA RTX 2000 Ada Generation Laptop GPU (8GB GDDR6 128-bit)



2 x DDR5-4800 SO-DIMM Slots (up to 64GB)



1 x M.2 NVMe PCIe 4.0 x4 SSD slot (2230/2242/2280/22110)
1 x M.2 NVMe PCIe 4.0 x4 / SATA SSD slot (2230/2242/2280/22110)

2 x HDMI® Connector
(Supports 4K 120Hz HDR, 8K 60Hz HDR,
and Variable Refresh Rate as specified in the HDMI 2.1 Specification)

2 x DisplayPort 1.4a (up to 7680x4320@60Hz)

1 x Thunderbolt 4 (40Gbps)

5 x USB 3.1 Gen 2 (10Gbps, Type-A)

3-in-1 Card Reader (UHS-II SD/SDHC/SDXC)

Wi-Fi 6

Bluetooth 5.2

Dual 2.5Gbps LAN

■ Windows 11 Ready

Length: 210mm (8.27in) x Width: 203mm (7.99in) x
Height: 62.2mm (2.45in)

■ Barebone

SPECIALIZED USES



THE ORIGINAL MINI PC

Unusual form factors, equally powerful. These ZBOX Mini PCs are there to power your next interesting project or venture with unrivalled robustness and performance for their size.

ROBUST EXTERIOR

LONGEVITY-FOCUSED

UNIQUE USE CASES

VERSATILE DESIGNS





ZBOX PI430AJ

The ZBOX pico PI430AJ with AirJet is the world's first mini PC to incorporate Frore Systems' AirJet Solid State Active Cooling chip, which generates rapid airflow without fans. The more robust cooling hardware allows the PI430AJ to be equipped with more capable hardware such as an Intel Core i3 CPU, 8GB LPDDR5 fast memory, and a full-fledged M.2 NVMe SSD, all while staying the size of a deck of playing cards.

S
P
E
C
I
A
L
I
Z
E
D
U
S
E
S
-
P
S
E
R
I
E
S



SOLID STATE COOLING



ULTRA COMPACT
0.21 LITERS



WHISPER
QUIET



8GB
MEMORY



WALL
MOUNTABLE





PICO SERIES



ZBOX-PI430AJ



Intel Core i3-N300
(8-core, 0.8 GHz, up to 3.8 GHz)



Intel UHD Graphics



8GB LPDDR5 onboard memory



■ 1 x M.2 NVMe PCIe 3.0 x4 / SATA SSD slot (2230/2242/2280)



■ 512GB M.2 NVMe SSD Pre-Installed

1 x HDMI® Connector
(Supports 4K 60Hz as specified in the HDMI 2.0 Specification)

1 x DisplayPort 1.4
(up to 4096x2160@60Hz)

DisplayPort via USB-C (3840x2160 @ 60Hz)

2 x USB 3.2 Gen2 (10Gbps, Type-A)
1 x USB 3.2 Gen2 (10Gbps, Type-C)

Solid State Active Cooling

Whisper-Quiet Operation

Wi-Fi 6

Bluetooth 5.2

Dual Gigabit LAN

■ Windows 11 Ready

■ Windows 11 Home Pre-Installed

Length: 114.8mm (4.52in) x Width: 76mm (2.99in) x
Height: 23.8mm (0.94in)

■ Barebone

■ Windows



ZBOX PI336

Uncover endless possibilities wherever you go with the 4K ZOTAC ZBOX pico, powered by the Intel Celeron N6211 processor. The ZBOX pico is one of the world's smallest full-fledged desktop PCs featuring an ultra-compact footprint. It supports a dual-monitor setup, can accept storage expansions via micro SDXC, packed with I/O ports and sports a fanless design providing extra durability as well as longer system longevity. ZBOX pico is the ideal media hub, security device and digital signage solution at any home, office or workspace.



FANLESS



SILENT



ULTRA COMPACT
0.18 LITERS



4GB
MEMORY



WALL
MOUNTABLE



SPECIALIZED USES - SERIES



PICO SERIES



ZBOX-PI336



Intel Celeron N6211
(dual-core, 1.2 GHz, up to 3.0 GHz)



Intel UHD Graphics



4GB LPDDR4X Memory (onboard)



128GB eMMC (onboard)

1 x HDMI® Connector
(Supports 4K 60Hz as specified in the HDMI 2.0 Specification)

1 x DisplayPort 1.4
(up to 4096x2160@60Hz)

2 x USB 3.1 Gen 2 (10Gbps, Type-A)
1 x USB 3.1 Gen 2 (10 Gbps, Type-C)

micro SDHC/SDXC card reader

Wi-Fi 6E

Bluetooth 5.2

Gigabit Ethernet

Windows 11 Pro Pre-Installed

Length: 115mm (4.53in) x Width: 76mm (2.99in) x
Height: 20.7mm (0.81in)

J A N U A R Y 2 0 2 6

ZOTAC
ZBOX
M I N I P C
P R O D U C T C A T A L O G

HDMI[®]
HIGH-DEFINITION MULTIMEDIA INTERFACE

The terms HDMI, HDMI High-Definition Multimedia Interface, HDMI trade dress and the HDMI Logos are trademarks or registered trademarks of HDMI Licensing Administrator, Inc.